



MN Ag By the Numbers

79,300	Farms
27.4 Million	Acres Farmed
1.1 Billion	Bushels of corn harvested
984 Million	Gallons milk produced
14.9 Million	Acres of timberland
6.2 Million	Market hogs

National Rankings

3 Soybeans
4 Corn
3 Hogs & pigs, hogs markets
6 Milk production, # of milk cows
1 Sugarbeets

National Rankings

1 Turkeys raised
1 Sweet Corn & Peas for processing
2 Oats, Spring Wheat, Wild Rice
6 Red meat production
10 Cattle on Feed

Top MN Ag Counties

Total Ag Receipts	Livestock	Crops
1. Stearns	1. Stearns	1. Polk
2. Martin	2. Martin	2. Renville
3. Renville	3. Blue Earth	3. Clay
4. Blue Earth	4. Kandiyohi	4. Redwood
5. Kandiyohi	5. Nicollet	5. Faribault

Cass County

National Ag Statistic Service Data

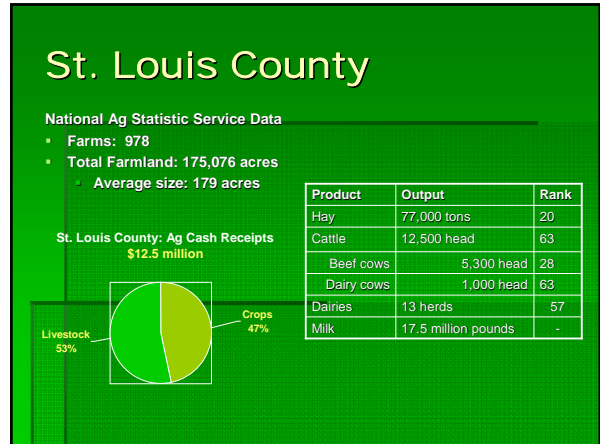
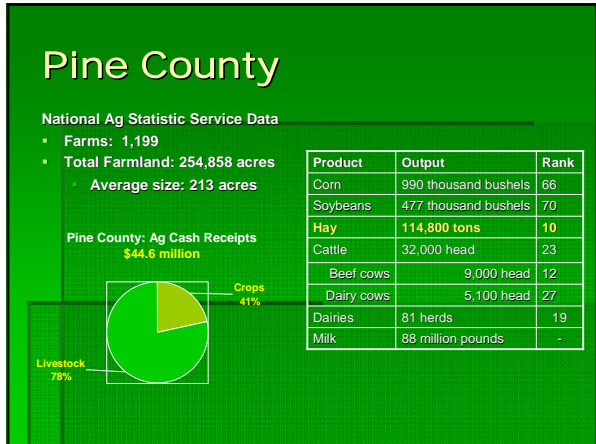
- Farms: 646
- Total Farmland: 197,153 acres
 - Average size: 305 acres

Cass County: Ag Cash Receipts
\$24.5 million

Product	Output	Rank
Hay	72,800 tons	24
Cattle	28,500 head	30
Beef cows	12,500 head	5
Dairy cows	1,300 head	54
Dairies	19 herds	49
Milk	26 million pounds	-

Livestock 91%

Crops 9%



Economic Impact

\$10.7 Billion in Cash Receipts

- 6th largest in the national
- Ag exports rank 7th in the nation

MN Ag adds \$55 Billion and 367,000 jobs to related economic sectors





Tourism

- Tourism Minnesota's 2nd largest employer
- Over 140,000 people
- Payroll \$3 billion.
- Gross receipts from tourism \$6 billion.
- 70% who took at spring or summer trip in Minnesota rated "observing natural scenery" as the most important activity of their trip.